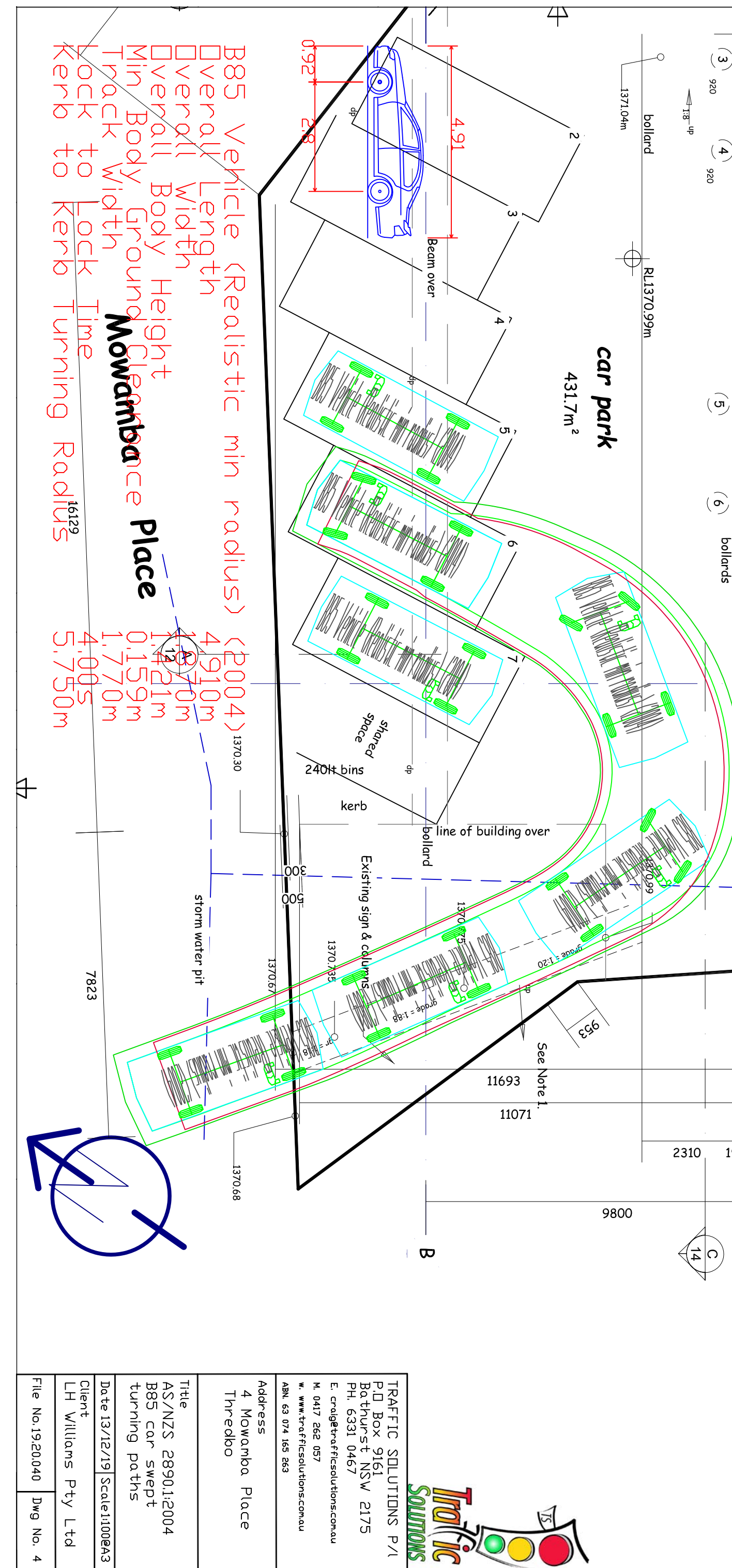
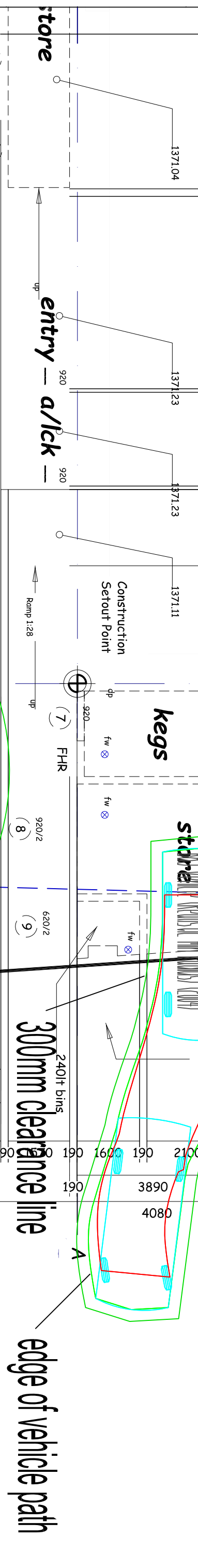
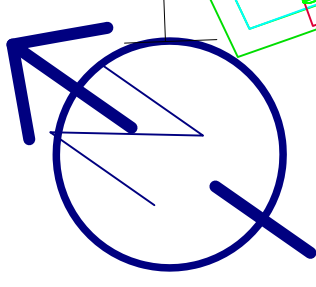


19120	20920	19120	6951	Revision note	Date	Signature
8070	191	4925	90	11655	190	2190
					190	2810
					190	1360



B85 Vehicle (Realistic min radius) (2004) 1370.30  
 Overall Length 4.910m  
 Overall Width 1.970m  
 Min Body Height 1.421m  
 Overall Ground Clearance 0.159m  
 Track Width 1.770m  
 Kerb to Lock Time 4.00s  
 Kerb to Lock Turning Radius 5.750m

**Mowamba Place**



TRAFFIC SOLUTIONS P/1  
 P.O. Box 9161  
 Bathurst NSW 2175  
 PH. 6331 0467  
 E. craig@trafficsolutions.com.au  
 M. 0417 262 057  
 W. www.trafficsolutions.com.au  
 ABN. 63 074 165 263

Address  
 4 Mowamba Place  
 Thredbo

Title  
 AS/NZS 2890.1:2004  
 B85 car swept  
 turning paths

Date 13/12/19 Scale: 1:100 @ A3

Client  
 LH Williams Pty Ltd

File No. 19.20.040 Dwg No. 4